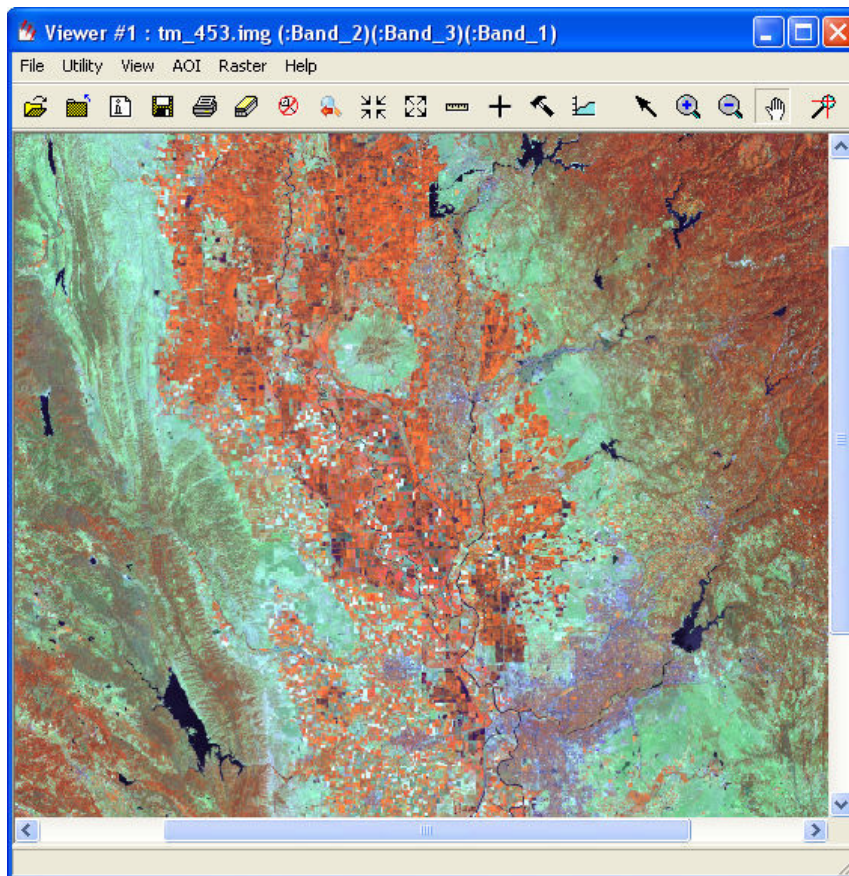
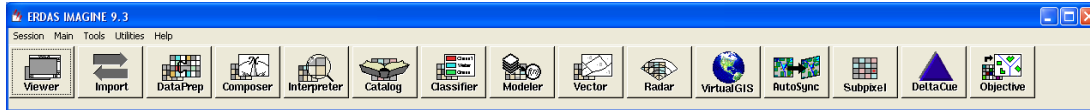


ERDAS Imagine Fundamentals



Created by: Nathan Jennings
Adjunct Professor, GIS
American River College
Update on: February 8, 2009

Overview	4
Getting Help	4
Starting ERDAS Imagine	5
Setting Session Preferences	5
<i>User Interface and Session Preferences</i>	6
Setting Data and Output Default Directory Locations.....	6
Bubble Help.....	7
Setting the Temporary File Directory Location.....	8
Setting Display Color and Sensor Band Combinations	8
<i>Viewer Preferences</i>	11
Image Viewer Defaults.....	11
Load an Image	12
<i>File Tab</i>	13
<i>Raster Options Tab</i>	14
<i>Multiple Tab</i>	15
Image Viewer	16
<i>Open Layer</i>	16
<i>Close Layer</i>	17
<i>Image Information (Image Info)</i>	17
<i>Save</i>	18
<i>Print</i>	18
<i>Remove Contents from Viewer</i>	18
<i>Reset Zoom</i>	18
<i>Previous Zoom</i>	18
<i>Zoom In by 2</i>	18
<i>Zoom Out by 2</i>	18
<i>Measure Tool</i>	18
<i>Inquire Cursor Tool</i>	18
<i>Toolbox Tool</i>	19
<i>Reset Window Tools</i>	20
<i>Navigation Tools</i>	20
Zoom In to Extent.....	20
Zoom Out to Extent.....	21
Pan Tool	21
<i>Start the GPS Tool</i>	21
<i>Image Viewer Menus</i>	22
File Menu.....	22
Utility Menu.....	24
View Menu	25
AOI (Area of Interest) Menu.....	28
Vector Menu.....	30
Raster Menu.....	30
Image Information (Detail)	35

<i>General Tab</i>	35
<i>Projection Tab</i>	38
<i>Histogram Tab</i>	38
<i>Pixel Data Tab</i>	39
<i>Image Info Tool Buttons</i>	40
<i>Edit Menu</i>	40
Image Viewer Basics	41
Contact Information	44