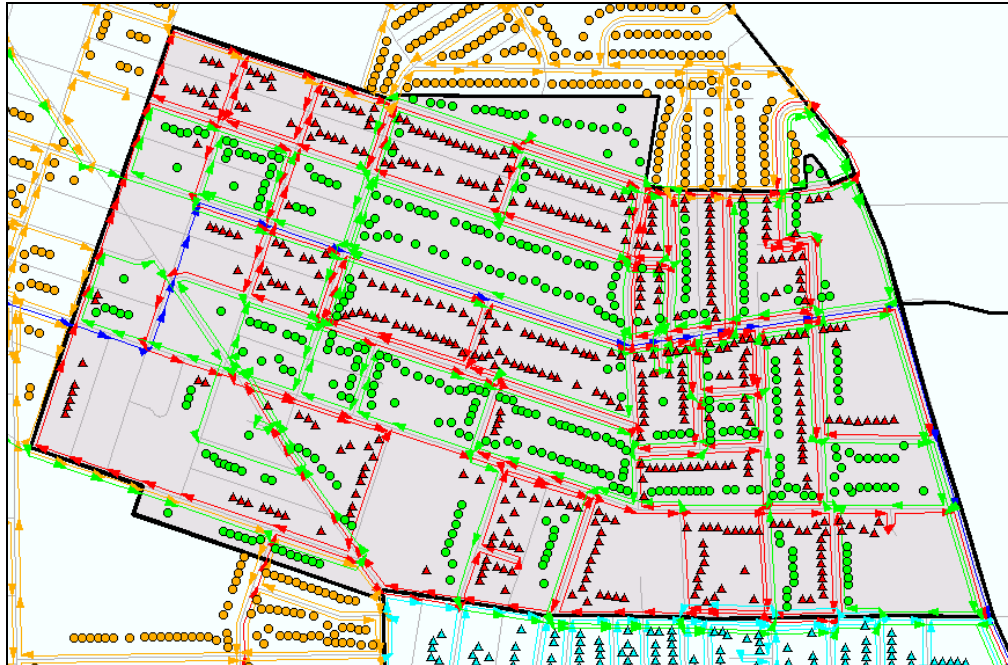


# Solid Waste Map Production – Help Document



Created by:

Nathan Jennings  
City of Sacramento  
Central GIS, IT Dept  
[njennings@cityofsacramento.org](mailto:njennings@cityofsacramento.org)

Updated on:

04.15.2009

## Purpose

A pre-existing ArcMap document has been created to generate Route Map Books for Solid Waste Routes. This utility allows one, several, or all route maps to be generated in PDF format at one time. If multiple sheets exist for a single route, then multiple map sheets will be generated. The application generates four sets of maps:

1. Vicinity Map showing the route relative to the north or south side of the city
2. Overview Map zoomed to the route
3. Routes showing route and labeled streets
4. Routes showing route, labeled streets, and parcels

## Pre-Requisites

The data within this ArcMap are pointing to server locations. The streets and parcels are pointing to the corporate locations of these files and will always be using the most up-to-date information. The Route and Map Grid files will need to be placed in a single location and the code will need to be modified to point to this data. Once these changes are made, no further modification should be needed.

## Solid Waste Map Production Utility

The custom Solid Waste Map Production toolbar needs to be loaded (checked) within ArcMap. The Select Route button is the only tool required to generate maps.



Once the Select Route tool is clicked, the following dialog box appears.



The user will click one of the Solid Waste Services. Once a service is chosen, a list of all the routes for that service is loaded into the white box on the right.



The user can select one, more than one, or all of the routes in the list.

### **Select One Route**

Click the desired route

### **Select More than One Non-Contiguous Route**

Use the Ctrl key when selecting routes.



## Select a Contiguous Group of Routes

Click the first route, click the Shift key and hold, and then click the last route in the list.



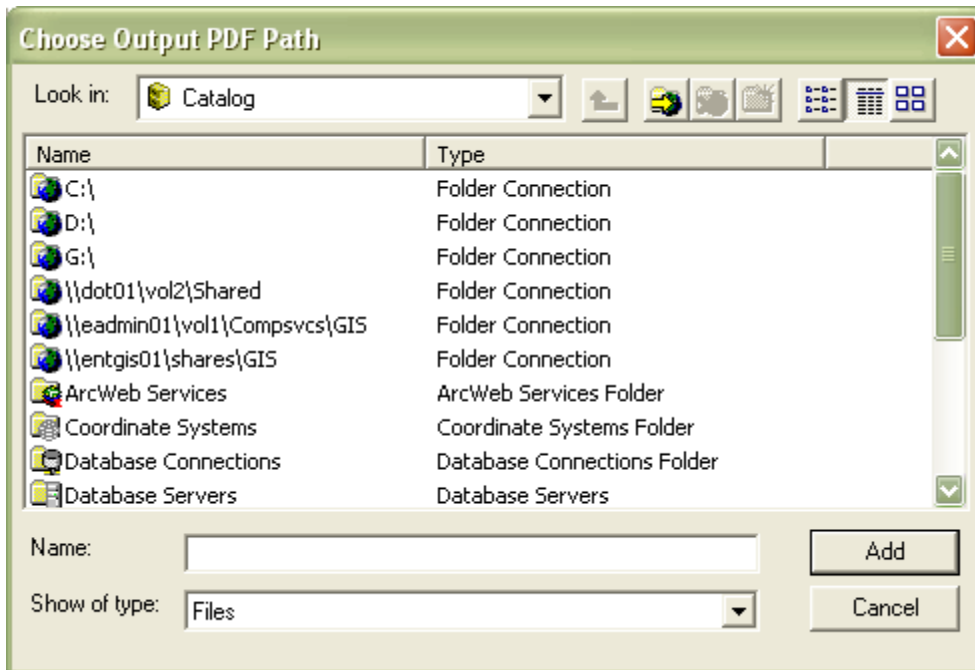
## Create Overview Map

A user can check the Create Overview Map box if the user wants to generate an overview map (PDF) for the route.



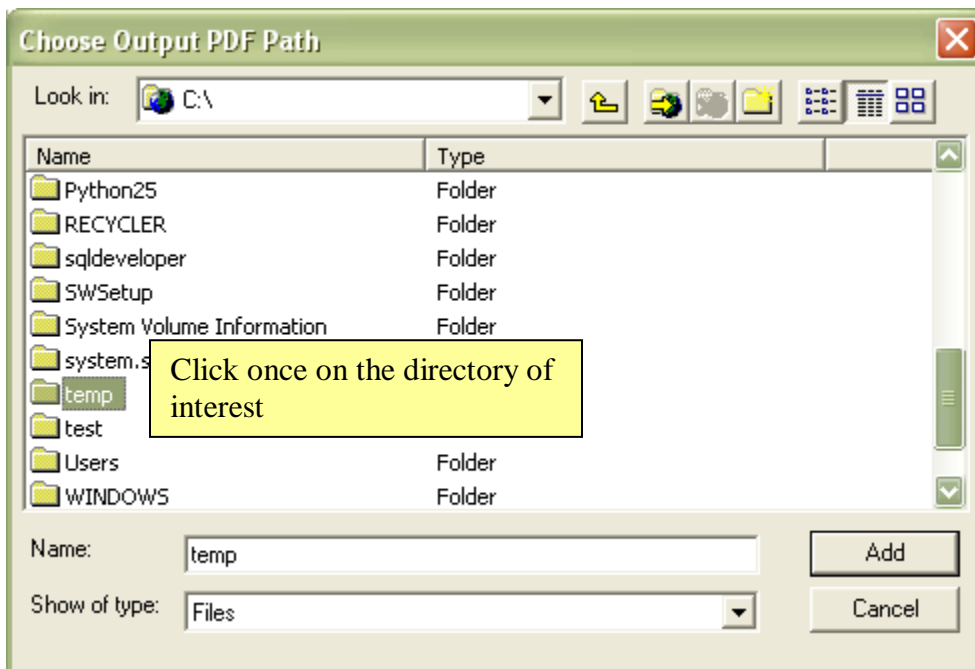
## Selecting the Output Directory for PDF Files

Once the routes are selected, the user will click the PDF Path button to bring up the ArcMap File locator dialog box.



The user can navigate to a specific directory and choose it.

Click the Add button to accept the directory location.



The white box to the right of the PDF Path button will be populated with the new directory location.

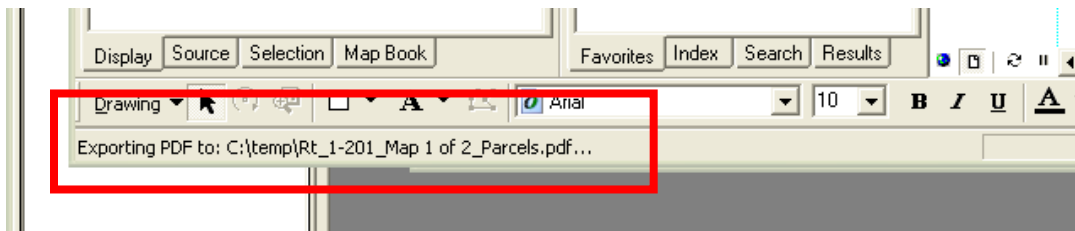


## Create the Routes

Once an output path has been chosen, click the Create Maps button. This will start the process of generating 4 sets of maps for the selected routes.

1. Vicinity Map showing the route in relation to the north or south side of the city.
2. Overview Map showing the route zoomed to the extent with some major roads.
3. All of the map pages for the selected routes showing the route boundary and labeled streets.
4. All of the map pages for the selected routes showing the route boundary, labeled streets, and parcel boundaries.

Progress can be noted by viewing the lower left corner of the ArcMap document. A path and file name will show up in the lower left corner.



## Close the Application

After the route maps have been generated, click the Close button to close the dialog box.

Click Cancel to close the dialog box without creating maps.

## Help

The Help button will bring up this help document in Adobe Acrobat Reader.

## About

The about button describes the author of the application and the update version.

